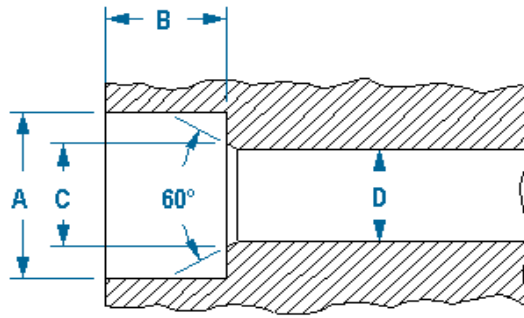


Socket Head Cap Screws



Screw Size	Decimal Equiv. (in)	Screw Head			Counterbore		Countersink	Clearance Drills (D)	
		Hex Key	Diameter	Height	Diameter (A)	Depth (B)	Diam. (60°) (C)	Norm. Fit	Close Fit
No. 0	0.060	0.050 in	0.096 in	0.060 in	1/8"	0.060 in	0.074 in	#49	#51
No. 1	0.073	1/16"	0.118 in	0.073 in	5/32"	0.073 in	0.087 in	#43	#46
No. 2	0.086	5/64"	0.140 in	0.086 in	3/16"	0.086 in	0.102 in	#36	3/32"
No. 3	0.099	5/64"	0.161 in	0.099 in	7/32"	0.099 in	0.115 in	#31	#36
No. 4	0.112	3/32"	0.183 in	0.112 in	7/32"	0.112 in	0.130 in	#29	1/8"
No. 5	0.125	3/32"	0.205 in	0.125 in	1/4"	0.125 in	0.145 in	#23	9/64"
No. 6	0.138	7/64"	0.226 in	0.138 in	9/32"	0.138 in	0.158 in	#18	#23
No. 8	0.164	9/64"	0.270 in	0.164 in	5/16"	0.164 in	0.188 in	#10	#15
No. 10	0.190	5/32"	0.312 in	0.190 in	3/8"	0.190 in	0.218 in	#2	#5
No. 12	0.216	5/32"	0.345 in	0.216 in	13/32"	0.216 in		1/4"	15/64"
1/4"	0.250	3/16"	0.375 in	0.250 in	7/16"	0.250 in	0.278 in	9/32"	17/64"
5/16"	0.313	1/4"	0.469 in	0.313 in	17/32"	0.313 in	0.346 in	11/32"	21/64"
3/8"	0.375	5/16"	0.563 in	0.375 in	5/8"	0.375 in	0.415 in	13/32"	25/64"
7/16"	0.438	3/8"	0.656 in	0.438 in	23/32"	0.438 in	0.483 in	15/32"	29/64"
1/2"	0.500	3/8"	0.750 in	0.500 in	13/16"	0.500 in	0.552 in	17/32"	33/64"
9/16"	0.563	7/16"	0.844 in	0.563 in	29/32"	0.563 in		39/64"	37/64"
5/8"	0.625	1/2"	0.938 in	0.625 in	1"	0.625 in	0.689 in	21/32"	41/64"
3/4"	0.750	5/8"	1.125 in	0.750 in	1-3/16"	0.750 in	0.828 in	25/32"	49/64"
7/8"	0.875	3/4"	1.313 in	0.875 in	1-3/8"	0.875 in	0.963 in	29/32"	57/64"
1"	1.000	3/4"	1.500 in	1.000 in	1-5/8"	1.000 in	1.100 in	1-1/32"	1-1/64"
1-1/8"	1.125	7/8"	1.688 in	1.125 in	1-13/16"	1.125 in		1-11/64"	#26
1-1/4"	1.250	7/8"	1.875 in	1.250 in	2"	1.250 in	1.370 in	1-5/16"	1-9/32"
1-1/2"	1.500	1"	2.250 in	1.500 in	2-3/8"	1.500 in	1.640 in	1-9/16"	1-17/32"
1-3/4"	1.750	1-1/4"	2.625 in	1.750 in	2-3/4"	1.750 in	1.910 in	1-13/16"	1-25/32"
2"	2.000	1-1/2"	3.000 in	2.000 in	3-1/8"	2.000 in	2.180 in	2-1/16"	2-1/32"
M1.6	0.062	1.5 mm	3.0 mm	1.6 mm	3.50 mm	1.6 mm	2.0 mm	1.95 mm	1.80 mm
M2	0.078	1.5 mm	3.8 mm	2.0 mm	4.40 mm	2.0 mm	2.6 mm	2.40 mm	2.20 mm
M2.5	0.098	2 mm	4.5 mm	2.5 mm	5.40 mm	2.5 mm	3.1 mm	3.00 mm	2.70 mm
M2.6	0.102	2 mm	5.0 mm	2.6 mm	6.00 mm	2.6 mm		3.20 mm	3.00 mm
M3	0.118	2.5 mm	5.5 mm	3.0 mm	6.50 mm	3.0 mm	3.6 mm	3.70 mm	3.40 mm
M4	0.157	3 mm	7.0 mm	4.0 mm	8.25 mm	4.0 mm	4.7 mm	4.80 mm	4.40 mm
M5	0.196	4 mm	8.5 mm	5.0 mm	9.75 mm	5.0 mm	5.7 mm	5.80 mm	5.40 mm
M6	0.236	5 mm	10.0 mm	6.0 mm	11.20 mm	6.0 mm	6.8 mm	6.80 mm	6.40 mm
M8	0.315	6 mm	13.0 mm	8.0 mm	14.50 mm	8.0 mm	9.2 mm	8.80 mm	8.40 mm
M10	0.393	8 mm	16.0 mm	10.0 mm	17.50 mm	10.0 mm	11.2 mm	10.80 mm	10.50 mm
M12	0.472	10 mm	18.0 mm	12.0 mm	19.50 mm	12.0 mm	14.2 mm	13.00 mm	12.50 mm
M14	0.551	12 mm	21.0 mm	14.0 mm	22.50 mm	14.0 mm	16.2 mm	15.00 mm	14.50 mm
M16	0.629	14 mm	24.0 mm	16.0 mm	25.50 mm	16.0 mm	18.2 mm	17.00 mm	16.50 mm
M18	0.708	14 mm	27.0 mm	18.0 mm	28.50 mm	18.0 mm		19.00 mm	18.50 mm
M20	0.787	17 mm	30.0 mm	20.0 mm	31.50 mm	20.0 mm	22.4 mm	21.00 mm	20.50 mm
M24	0.944	19 mm	36.0 mm	24.0 mm	37.50 mm	24.0 mm	26.4 mm	25.00 mm	24.50 mm
M30	1.181	22 mm	45.0 mm	30.0 mm	47.50 mm	30.0 mm	33.4 mm	31.50 mm	31.00 mm
M36	1.417	27 mm	54.0 mm	36.0 mm	56.50 mm	36.0 mm	39.4 mm	37.50 mm	37.00 mm
M42	1.653		63.0 mm	42.0 mm	66.00 mm	42.0 mm	45.6 mm	44.00 mm	43.00 mm
M48	1.889		72.0 mm	48.0 mm	75.00 mm	48.0 mm	52.6 mm	50.00 mm	49.00 mm